



The Buddhist Community E-SANGHA

[Buddhism Portal Home](#) [Board Guidelines](#)

[Blog Gallery](#)
[Help](#) [Search](#) [Members](#) [Calendar](#) [Live Chat](#)

[Buddhism Books](#) :: [Buddhism Directory](#) :: [Zen Shop T-shirt](#) :: [e-Cards](#) :: [Donate](#)

Logged in as: **bonzo** ([Log Out](#)) [My Controls](#) · [View New Posts](#) · [My Assistant](#) · [0 New Messages](#)

► [E-sangha, Buddhist Forum and Buddhism Forum](#) > [Traditions](#) > [Tibetan Buddhism General Forum](#)

[Tibetan Relics Gallery](#)

Authentic Tibetan Buddhist Art
Thangka, Ritual Implements, Statues
www.tibetanrelics.com

[Chimes that Ring True.](#)

Tune into your soul's music with
chimes & bells for mediation.
www.IsabellaCatalog.com

[Find a Buddhist Therapist](#)

Therapists Who Combine Buddhism &
Psychology. Listings Avail Online
www.ContemplativePsychotherapy.net

Browse the web faster. Get
Firefox with **Google Toolbar**.

[Buddhist T-shirt & Buddhism Gift](#) :: [Free Tibet T-shirt & Gift](#) :: [Vegetarian T-shirts & Vegan Gifts](#) :: [Peace T-shirt](#)
:: [Job T-shirt](#)
[Cool T-shirt](#) :: [Pixel Gear](#) :: [Retro T-shirt & Retro T-shirts](#) :: [America T-shirts](#) :: [Buddha T-shirts](#) :: [One World Gear](#) :: [Buddha Statues](#)

[+ ADDREPLY](#) [NEWTOPIC](#) [NEWPOLL](#)

► [Pine Forest Saga \(FAQs\)](#)

[Outline](#) · [\[Standard \]](#) · [Linear+](#)

[Track this topic](#) | [Email this topic](#) | [Print this topic](#)

bonzo	Today, 05:27 PM Post #1
<p>Just Looking</p> <p>Group: Members Posts: 30 Joined: 28-September 06 Member No.: 15,644</p>	<p>I see that Mr Penney is still intent on keeping his Pine Forest 'Sangha' running. I find it odd that under the FAQ section on the Pine Forest website, the following question doesn't appear. This must be the most frequently asked question of them all and it has not yet been answered:-</p> <p>"When, where, in what tradition, and under who's auspices was Edward Penney ordained as a Buddhist monk?"</p>
<p>OFF CARD PM REPORT TOP QUOTE REPLY</p>	
Pero	<p>Today, 05:47 PM Post #2</p> <p>Hey Marpo, check this out:</p>



Junior Contributor



Group: Members

Posts: 454

Joined: 13-February 06

From: Slovenia

Member No.: 11,523



Notice anything? 😊

BTW, I have decided to go to Pine Forest Sangha to become a monk so that I too will have the chance to dress in all those cool robes and feed the goats and ducks. I think we would be allowed to wear turbans as well, so Light Samurai could join me. 😊

According to the tradition there I will also teach the profound Dzogchen teaching given to me by the great Pine tree. You will of course all be invited to come, with the condition that you leave all your common sense and logic behind as they are an obstacle to correct Buddhist practice. As a reward to your right decision, you might be allowed to play the big singing bowl (winks to Marpo).

All eyes turn to the west.
There is a great church.
Inside resides a dog and a liar.
Although they appear as one,
they are of two natures.

If you have played sometimes the game of transmigration you know very well how it goes. In this game, sometimes you become god and sometimes you go to hell. Then you are really surprised because you thought you had become very important!
- Chogyal Namkhai Norbu Rinpoche

OFF CARD

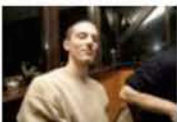
REPORT TOP

QUOTE REPLY

Pero

Today, 06:21 PM

Post #3



Junior Contributor



Group: Members

Oh yes, almost forgot. I think we could work out to do some practice in our pajamas as well, so that Pema Rigdzin would join us. Although I personally prefer boxer shorts and a t-shirt at most in these hot summer days. Anyway, if this doesn't attract you enough PR, we could try to arrange for an occasional pajama party. Also, maybe we will add belly dancers to lure in Sunsimaos as well. What say you Pema? You can PM me any questions you might have and I'll be sure to answer you with everything else but that which you were interested in

Group: Members
Posts: 454
Joined: 13-February 06
From: Slovenia
Member No.: 11,523

knowing as soon as possible.

All eyes turn to the west.
There is a great church.
Inside resides a dog and a liar.
Although they appear as one,
they are of two natures.

If you have played sometimes the game of transmigration you know very well how it goes. In this game, sometimes you become god and sometimes you go to hell. Then you are really surprised because you thought you had become very important!
- Chogyal Namkhai Norbu Rinpoche

OFF CARD PM

REPORT TOP

QUOTE REPLY

michaelb

Today, 07:15 PM

Post #4



Contributor
□□□

Group: Members
Posts: 2,364
Joined: 22-December 05
From: England.
Member No.: 10,489

QUOTE(Pero @ Jul 1 2007, 08:47 AM)

Notice anything? ☹️

He has put his bell directly on the floor. That's a bit naughty. 🙄



OFF CARD PM

REPORT TOP

QUOTE REPLY

NamaRupa

Today, 07:50 PM

Post #5



Just Looking
□

Group: Members
Posts: 72
Joined: 9-September 06
Member No.: 15,255

That must be the saddest shrine I've ever seen. It's so lifeless! --- gives me shudders 😞

Oh, well, if it is the Welsh karma to fall for false teachers and spurious teachings, so be it! I can only pray that one day a true master of an authentic lineage visits these parts and opens people's eyes...Off to read "Crying to the guru from afar" again, and again, and again.

OFF CARD PM

REPORT TOP

QUOTE REPLY

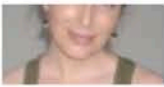
Red dust

Today, 09:35 PM

Post #6



QUOTE(michaelb @ Jul 1 2007, 05:15 AM)



Librarian

Moderator

Group: Tibetan Buddhism

Moderator

Posts: 3,593

Joined: 15-December 04

Member No.: 5,161

QUOTE(Pero @ Jul 1 2007, 08:47 AM)

Notice anything? 😏

He has put his bell directly on the floor. That's a bit naughty. 😏

Michael I noticed that too....made me go 😏

Everyone even a newbie like me knows that is wrong 😏

I think this guy should just advertise as a new age bed and breakfast and you can role play being enlightened.

I need some coffee it's early morning here...you know this ala bed and breakfast lets relax and get enlightened could have marketing potential.



Though the mind that is free of meditation may be enjoyable, oh, how happy is the meditation that is free of the mind! *Longchenpa*

OFF CARD PM

REPORT TOP

QUOTE REPLY

forestmat

Today, 09:56 PM

Post #7



Just Looking

Group: Members

Posts: 55

Joined: 27-March 07

From: Bangkok, Thailand

Member No.: 20,092

I just emailed the PFS to see what reaction i would get. Here is a copy of my email.

Dear Sirs,

For the attention of Edo Shonin

I regularly contribute to various Buddhist Temples around the world and currently support a number of different charities.

I came across your website today. Having been formerly involved with another organisation which was, and is, the subject of some controversy, namely the NKT, I would be grateful if you could kindly advise me who your ordaining preceptor was at the time of your ordination as a monk.

Did you receive upasampada with a recognised preceptor and if so, who?

I notice also that you wear a combination of Tibetan Gelugpa, Zen and Western clothes/robes which I have never seen before here or anywhere in Asia.

Lastly, in order to avoid any confusion, would you kindly advise me, when and by whom, you yourself were made an ordaining preceptor.

I very much look forward to receiving your response and hope that this email finds you in good health.

Yours in the Dhamma,

forestmat

May you find the true Dhamma in your heart

OFF

Enter Keywords

« Next Oldest · **Tibetan Buddhism General Forum** · Next Newest »

Search Topic

3 User(s) are reading this topic (0 Guests and 0 Anonymous Users)

3 Members: [bonzo](#), [Chigpu](#), [mudra](#)

|-- Tibetan Buddhism General Forum

Go



Free Buddhist Friendship Site
Meet Buddhist friends in your city. 100% Free.
www.mybuddhistfriends.com



Member Original Skin

English

[Lo-Fi Version](#)

0.1374sec

--

9 queries

GZIP Enabled

Time is now: 1st July 2007 - 10:36 PM

[RSS 2.0](#)

Invision Power Board v2.0.4 © 2007 IPS, Inc.
Licensed to: KL Leo, e-Sangha